



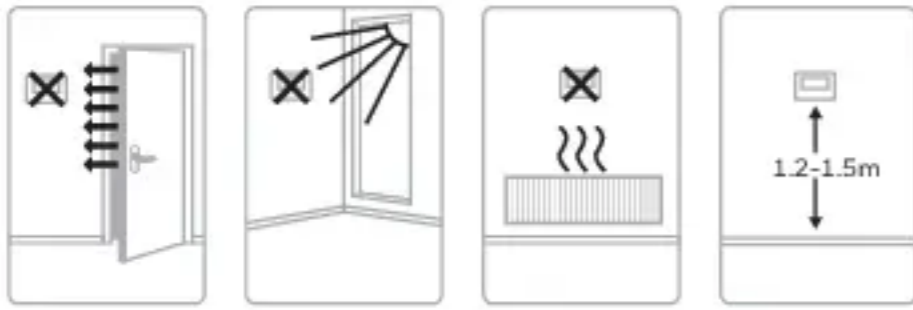
DT135 Digital Thermostat

Installation and User Guide

1 Installation

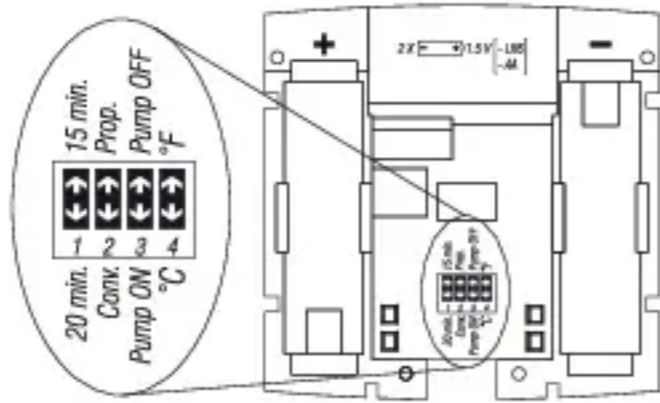
Must be installed by a competent person. To ensure your safety, make sure the mains power is switched OFF before accessing wiring.

1.1 Install the Thermostat



2 Thermostat Configuration

Before installing the thermostat on the wall, it must be configured using the dip switches at the back.



2.1 15 or 20 minute Cycles



The thermostat can operate on 15 or 20 minute cycles. While 15-minute cycles provide greater comfort, the heating system will be running more often.

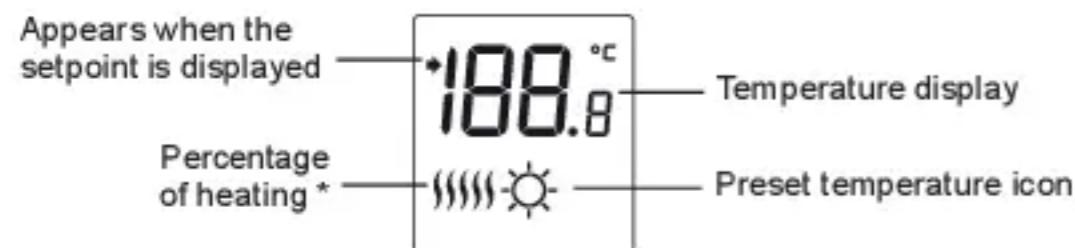
2.2 Temperature Control Modes



You can choose between two temperature control modes:

3 Battery Installation

*The thermostat displays the percentage of heating required to maintain the desired temperature. For example, is displayed when heating is activated at 40 percent.



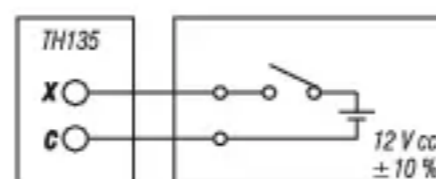
Display					
% of heating	1 to 24%	25 to 49%	50 to 74%	75 to 99%	100%

When you first install the batteries in the thermostat, the unit runs a sequence of tests for approximately 5 seconds. After the tests, the screen should display the current temperature.

6 Connection to Telephone Controller or a Home Automation System

The thermostat incorporates a telephone controller or home automation interface which allows you to switch from the or Setting to the Vacation setting () and vice versa.

NOTE: For details on wiring and operating the telephone controller or home automation system, refer to the instruction manual of particular models.



7 Technical Specifications

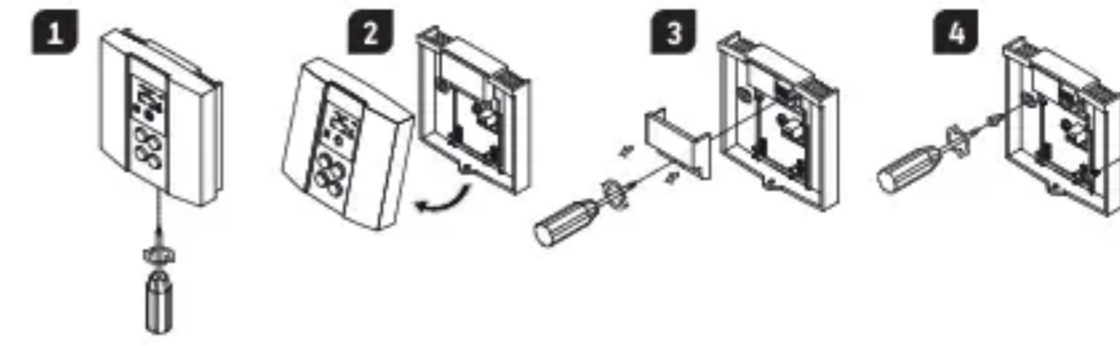
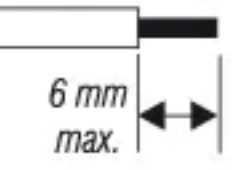
- Power supply: 2 LR6 alkaline batteries
- Max. resistive load: 5A @ 240 VAC
- Max. inductive load: 2A @ 240 VAC
- Auxiliary input (telephone interface): 12 VDC, +/- 10%, 2.5 mA
- Control device: Electronic
- Automatic action: Type 1 B
- Storage temperature: -20 °C to 50 °C (-4 °F to 122 °F)
- Operating temperature: 0 °C to 50 °C (32 °F to 122 °F) (95% relative humidity without condensation)
- Temperature setting range in heating: 5° C to 30 °C (40 °F to 85 °F)
- Temperature display scale: 0.1 degree
- Temperature reading accuracy: +/- 0.5 °C (+/- 0.9 °F)
- Software: Class A
- Insulation: Class II
- Protection degree: IP 20
- Environmental Compliance: RoHS-Directive 2011/65/EU

1.2 Thermostat Installation

Remove the mounting plate from the thermostat.

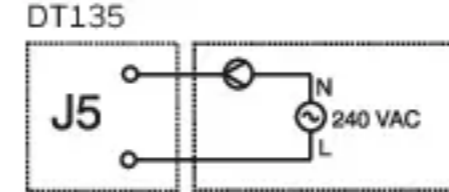
- Loosen the screw holding the mounting plate to the thermostat.
- Lift the lower part of the plate to remove it from the thermostat.
- Loosen the screw holding the wire cover, and remove it.
- Secure the mounting plate to the wall and make the appropriate connection (refer to section 2).

14 - 22 AWG
(0.5 - 1.5 mm²)

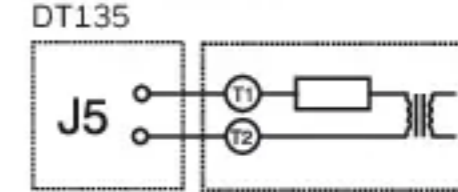


1.3 Wiring

Connection to a circulator



Connection to a boiler



Proportional Adaptive Mode

This mode analyses previous cycles in order to define the length of the upcoming cycle. This mode guarantees optimal regulation of 3 cycles (switch #1 to 20 min.) or 4 cycles (switch #1 to 15 min.) per hour, regardless of the season.

- Ideal for:
- Radiant or convection electrical heating system
 - Circulator control in a hot water system

Conventional Mode with Anticipation

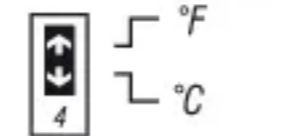
This mode turns the system On or Off when the temperature reaches preset levels. This mode is compatible with all heating systems. It is recommended for a multi-zone system or when a thermostat directly controls a furnace equipped with a combustion gas purge cycle of more than 30 seconds.

2.3 Pump Protection



For hot water installations, it is recommended to activate the pump at least one minute every 24 hours in order to avoid seizure. Place switch #3 down to activate this function. For all other installations, leave switch #3 in the Off position (otherwise your system will be activated 1 minute every 24 hours).

2.4 Temperature in °C or °F



The thermostat is factory-set to °C. If you wish to change the temperature display to °F, slide switch #4 upward. Please note that if you change from °C to °F or vice versa, you must reset the Comfort () , Economy () and Vacation () settings accordingly.

4 Battery Replacement

The thermostat will display an icon indicating that the batteries must be replaced. This icon will flash for 60 days. After this period, the thermostat will shut down your heating unit. After the battery replacement, you have to reprogram the , and settings (refer to section 4).

5 Temperature Settings

Preset Temperature	Default Setting
Comfort temperature	20 °C (68 °F)
Economy temperature	18 °C (64 °F)
Vacation temperature	10 °C (50 °F)

- To set the Comfort temperature, select the desired degree using the buttons and push the button until the icon is displayed (about 3 seconds).
- To set the Economy temperature, select the desired degree using the buttons and push the button until the icon is displayed about 3 seconds).
- To set the Vacation temperature, select the desired degree using the buttons and push simultaneously the and buttons until the icon is displayed (about 3 seconds). **This setting is can only be used by the telephone controller or a home automation system**

Bk-electronic GmbH
Hardhofweg 40
74821 Mosbach
Germany

For assistance with this product please visit
livewell.honeywellhome.com

resideo

© 2019 Resideo Technologies, Inc.
This product manufactured by Resideo and its affiliates.
The Honeywell Home trademark is used under license
from Honeywell International Inc. All rights reserved.

33-00053ED-02