

Product identification

ADEO Ref	Supplier Ref	EAN CODE	Weight Packaging(Kg)	Size Packaging(Cm)
830947	B18-8X50-4P	3276007106725	0.003	13.5*4.8
830946	B18-8X60-2P	3276007106732	0.003	13.5*4.8
831051	B18-5X40-70D1	3276007106763	0.025	12*8*4.5
831050	B18-6X20-70D1	3276007106787	0.025	12*8*4.5
831067	B18-6X30-50D1	3276007106800	0.025	12*8*4.5
831065	B18-6X40-50D1	3276007106824	0.025	12*8*4.5
830943	B18-6X50-40D1	3276007106855	0.025	12*8*4.5
830983	B18-6X60-30D1	3276007106879	0.025	12*8*4.5
830958	B18-4X10-20P	3276007106077	0.003	13.5*4.8
831080	B18-4X16-20P	3276007106084	0.003	13.5*4.8
831030	B18-4X20-20P	3276007106091	0.003	13.5*4.8
830982	B18-4X25-15P	3276007106107	0.003	13.5*4.8
831079	B18-4X30-15P	3276007106114	0.003	13.5*4.8
830957	B18-4X40-12P	3276007106121	0.003	13.5*4.8
831013	B18-4X50-10P	3276007106138	0.003	13.5*4.8
831055	B18-5X16-15P	3276007106145	0.003	13.5*4.8
830976	B18-5X20-12P	3276007106169	0.003	13.5*4.8
830987	B18-5X25-12P	3276007106183	0.003	13.5*4.8
831054	B18-5X30-10P	3276007106206	0.003	13.5*4.8
830971	B18-5X40-8P	3276007106237	0.003	13.5*4.8
830985	B18-5X50-6P	3276007106251	0.003	13.5*4.8
831019	B18-5X60-6P	3276007106275	0.003	13.5*4.8
830992	B18-6X16-10P	3276007106572	0.003	13.5*4.8
831006	B18-6X20-10P	3276007106596	0.003	13.5*4.8
831073	B18-6X25-10P	3276007106619	0.003	13.5*4.8
830975	B18-6X30-8P	3276007106640	0.003	13.5*4.8
830949	B18-6X40-8P	3276007106657	0.003	13.5*4.8
831072	B18-6X50-6P	3276007106664	0.003	13.5*4.8
830973	B18-6X60-6P	3276007106671	0.003	13.5*4.8
831053	B18-6X70-4P	3276007106688	0.003	13.5*4.8
830986	B18-6X80-4P	3276007106695	0.003	13.5*4.8
831034	B18-8X30-4P	3276007106701	0.003	13.5*4.8
831022	B18-8X40-4P	3276007106718	0.003	13.5*4.8

Template version history			
Version	Status	Date Status	Comments
V.0	Under construction	20/08/2018	Template construction
V.1	Validated construction	30/09/2019	Validated Template

Object

Technical data sheet of products

Technical data

«Zhejiang Excellent Industries Co.,Ltd »

«No.57 Donggang Road, Daqiao New District, Haiyan, 314304 Zhejiang, China »

Name product		Contain battery	
Power in Watt		Weight of the battery (gram)	
Nett Weight in gram (without batteries, without packaging)		Type of battery (Li-ion / Alkalin, ...)	
Size of product: Lxlxh in centimetre			
Accessories included: detailed it			
Weight packaging			
Size packaging			

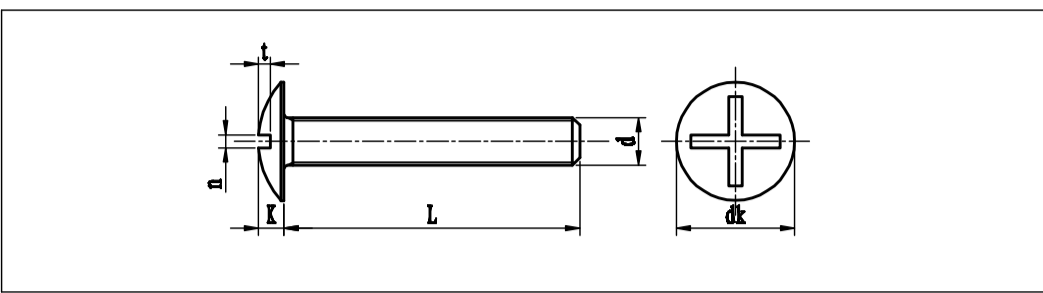
Remark: The main technical features could be adjusted by supplier based on different kinds of products.

Photo

Zhejiang Excellent Industries Co., Ltd.	Technical data sheet	Date of creation	2020/04/02
		Revision index	Rve-1
		Date of Validation	2020/04/02

Description	B18 Screw ,nut and 1 washer cross-slotted Steel 8.8 WZP+Cr3
-------------	---

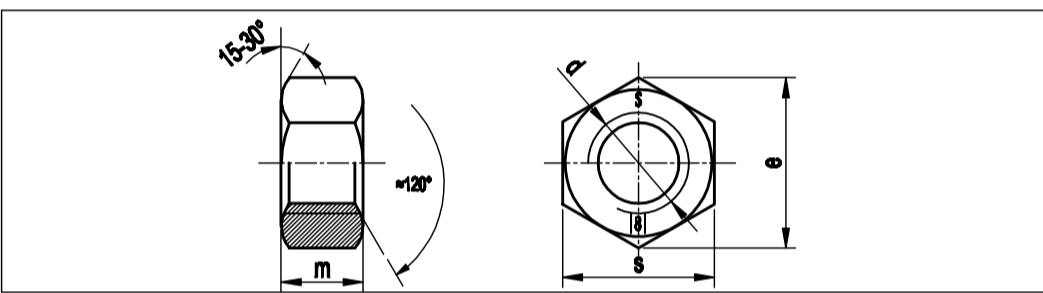
Standard reference	none
--------------------	------



Dimensional	
All dimensions are in millimeters. No eccentricity allowed (not visible at 50cm distance). No broken thread, no hollow teeth, no burnt teeth, no fall-off. The surface must be smooth and free of oil, foam, dust, rust, black spot or any other undesirable phenomena.	
size	M4 M5 M6 M8
P	0.7 0.8 1.0 1.25
d	max 3.97 4.97 5.97 7.97
	min 3.74 4.74 5.69 7.63
dk	max 10.5 13.0 15.5 20.5
	min 8.5 11.0 13.0 17.5
K	max 2.6 3.1 3.7 4.8
	min 1.7 2.1 2.6 3.7
n	max 1.71 1.71 2.11 2.61
	min 1.0 1.0 1.36 1.8
t	min 1.0 1.2 1.5 2.0
proof load(N)	min 5100 6230 11600 21200
L	10 16 20 25 30 40 50 60 70 80
max	10.65 16.7 21.0 26.0 31.0 41.0 51.0 61.5 71.5 81.5
min	9.35 15.3 19.0 24.0 29.0 39.0 49.0 58.5 68.5 78.5

Mechanical properties	
Material:	35K
Coating:	White zine plated
Hardness:	250-335 HV

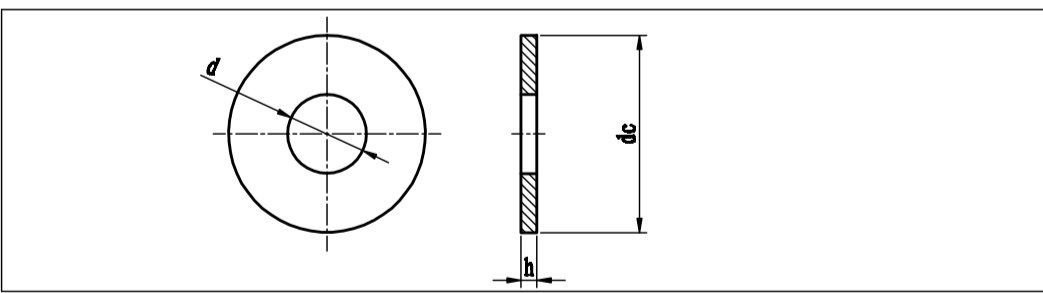
Standard reference	DIN 934
--------------------	---------



Dimensional	
All dimensions are in millimeters. No eccentricity allowed (not visible at 50cm distance). The surface must be smooth and free of oil, foam, dust, rust, black spot or any other undesirable phenomena.	
size	M2.5 M3 M4 M5 M6 M8 M10 M12 M14 M16 M18 M20
s	max 5.0 5.5 7.0 8.0 10.0 13.0 17.0 19.0 22.0 24.0 27.0 30.0
	min 4.82 5.32 6.78 7.78 9.78 12.73 16.73 18.67 21.67 23.67 26.16 28.16
m	max 2.0 2.4 3.2 4.0 5.0 6.5 8.0 10.0 11.0 13.0 15.0 16.0
	min 1.75 2.15 2.9 3.7 4.7 6.14 7.64 9.64 10.3 12.3 14.3 14.9
e	min 5.45 6.01 7.66 8.79 11.05 14.38 18.9 21.1 24.49 26.75 29.56 32.95
	min - 4000 7000 11400 16000 29000 46000 67000 92000 126000 154000 196000

Mechanical properties	
Material:	≤M14:Q195,>M14:35K
Coating:	White zine plated
Hardness:	≤302 HV

Standard reference	NF E25-513 M
--------------------	--------------



Dimensional	
All dimensions are in millimeters. No eccentricity allowed (not visible at 50cm distance). The surface must be smooth and free of oil, foam, dust, rust, black spot or any other undesirable phenomena.	
Size	d dc h
M2.5	2.7-2.94 6.64-7.0 0.43-0.57
M3	3.2-3.38 7.64-8.0 0.72-0.88
M4	4.3-4.48 9.64-10.0 0.72-0.88
M5	5.3-5.48 11.57-12.0 0.9-1.1
M6	6.4-6.62 13.57-14.0 1.08-1.32
M8	8.4-8.62 17.57-18.0 1.35-1.85
M10	10.5-10.77 21.48-22.0 1.8-2.2
M12	13.0-13.27 26.48-27.0 2.25-2.75
M14	15.0-15.27 29.48-30.0 2.25-2.75
M16	17.0-17.27 31.38-32.0 2.7-3.3
M18	18.0-18.33 35.38-36.0 2.7-3.3
M20	21.0-21.33 39.38-40.0 2.7-3.3

Mechanical properties	
Material:	Q235
Coating:	White zine plated
Hardness:	100-250 HV

Family code	Supplier refs	Bolt size	Nut size	Washer size
B18	B18-4x10-20P	4x10	M4	M4
B18	B18-4x16-20P	4x16	M4	M4
B18	B18-4x20-20P	4x20	M4	M4
B18	B18-4x25-15P	4x25	M4	M4
B18	B18-4x30-15P	4x30	M4	M4
B18	B18-4x40-12P	4x40	M4	M4
B18	B18-4x50-10P	4x50	M4	M4
B18	B18-5x16-15P	5x16	M5	M5
B18	B18-5x20-12P	5x20	M5	M5
B18	B18-5x25-12P	5x25	M5	M5
B18	B18-5x30-10P	5x30	M5	M5
B18	B18-5x40-8P	5x40	M5	M5
B18	B18-5x50-6P	5x50	M5	M5
B18	B18-5x60-6P	5x60	M5	M5
B18	B18-5X40-70D1	5x40	M5	M5
B18	B18-6X20-70D1	6x20	M6	M6
B18	B18-6X30-50D1	6x30	M6	M6
B18	B18-6X40-50D1	6x40	M6	M6
B18	B18-6X50-40D1	6x50	M6	M6
B18	B18-6X60-30D1	6x60	M6	M6
B18	B18-6x16-10P	6x16	M6	M6
B18	B18-6x20-10P	6x20	M6	M6
B18	B18-6x25-10P	6x25	M6	M6
B18	B18-6x30-8P	6x30	M6	M6
B18	B18-6x40-8P	6x40	M6	M6
B18	B18-6x50-6P	6x50	M6	M6
B18	B18-6x60-6P	6x60	M6	M6
B18	B18-6x70-4P	6x70	M6	M6
B18	B18-6x80-4P	6x80	M6	M6
B18	B18-8x30-4P	8x30	M8	M8
B18	B18-8x40-4P	8x40	M8	M8
B18	B18-8x50-4P	8x50	M8	M8
B18	B18-8x60-2P	8x60	M8	M8