

Product identification

ADEO Ref	Supplier Ref	EAN CODE	Weight Packaging(Kg)	Size Packaging(Cm)
831273	B30-10X200-6BV1	3276007108279	0.156	36*12*11
831283	B30-12X180-6BV1	3276007108347	0.156	36*12*11
831264	B30-14X180-6BV1	3276007108378	0.156	36*12*11
831292	B30-14X200-6BV1	3276007108385	0.156	36*12*11
831267	B30-10X180-7BV1	3276007108262	0.156	36*12*11
831265	B30-12X200-7BV1	3276007108354	0.156	36*12*11
831291	B30-16X200-7BV1	3276007108583	0.156	36*12*11
831286	B30-16X180-8BV1	3276007108415	0.156	36*12*11
831275	B30-6X70-2BV5	3276007107951	0.089	17.5*8*11
831297	B30-6X100-2BV5	3276007107968	0.089	17.5*8*11
831302	B30-8X100-2BV5	3276007108002	0.089	17.5*8*11
831308	B30-8X120-2BV5	3276007108026	0.089	17.5*8*11
831274	B30-8X140-2BV5	3276007108040	0.089	17.5*8*11
831300	B30-10X90-2BV5	3276007108200	0.089	17.5*8*11
831295	B30-10X120-2BV5	3276007108224	0.089	17.5*8*11
831307	B30-10X140-2BV5	3276007108248	0.089	17.5*8*11
831268	B30-10X160-2BV5	3276007108255	0.089	17.5*8*11
831294	B30-12X100-2BV5	3276007108309	0.089	17.5*8*11
831293	B30-12X120-2BV5	3276007108316	0.089	17.5*8*11
831311	B30-12X140-2BV5	3276007108323	0.089	17.5*8*11
831284	B30-12X160-2BV5	3276007108330	0.089	17.5*8*11
831306	B30-14X160-2BV5	3276007108361	0.089	17.5*8*11
831282	B30-16X160-2BV5	3276007108392	0.089	17.5*8*11
830934	B30-6X60-2BV5	3276007128833	0.089	17.5*8*11
830933	B30-6X80-2BV5	3276007128840	0.089	17.5*8*11
830901	B30-10X80-2BV5	3276007128949	0.089	17.5*8*11

830900	B30-10X100-2BV5	3276007128956	0.089	17.5*8*11
831303	B30-5X16-3BV5	3276007107890	0.089	17.5*8*11
831309	B30-5X20-3BV5	3276007107906	0.089	17.5*8*11
831276	B30-5X30-3BV5	3276007107913	0.089	17.5*8*11
831298	B30-5X40-3BV5	3276007107920	0.089	17.5*8*11
831269	B30-5X50-3BV5	3276007107937	0.089	17.5*8*11
831287	B30-5X60-3BV5	3276007107944	0.089	17.5*8*11
831296	B30-8X70-3BV5	3276007107982	0.089	17.5*8*11
831301	B30-10X70-3BV5	3276007108187	0.089	17.5*8*11
831312	B30-12X50-3BV5	3276007108286	0.089	17.5*8*11
831266	B30-12X70-3BV5	3276007108293	0.089	17.5*8*11
830935	B30-6X20-3BV5	3276007128802	0.089	17.5*8*11
830916	B30-6X30-3BV5	3276007128819	0.089	17.5*8*11
830924	B30-6X40-3BV5	3276007128826	0.089	17.5*8*11
830911	B30-8X20-3BV5	3276007128857	0.089	17.5*8*11
830920	B30-8X30-3BV5	3276007128864	0.089	17.5*8*11
830932	B30-8X40-3BV5	3276007128871	0.089	17.5*8*11
830923	B30-8X60-3BV5	3276007128888	0.089	17.5*8*11
830915	B30-8X80-3BV5	3276007128895	0.089	17.5*8*11
830914	B30-10X30-3BV5	3276007128901	0.089	17.5*8*11
830922	B30-10X40-3BV5	3276007128918	0.089	17.5*8*11
830931	B30-10X50-3BV5	3276007128925	0.089	17.5*8*11
830913	B30-10X60-3BV5	3276007128932	0.089	17.5*8*11
831036	B30-10X50-2P	3276007107296	0.003	13.5*4.8
831007	B30-10X40-2P	3276007107272	0.003	13.5*4.8
831310	B30-8X40-4P	3276007107180	0.003	13.5*4.8
831270	B30-8X50-4P	3276007107203	0.003	13.5*4.8
831271	B30-6X60-4P	3276007107074	0.003	13.5*4.8
831047	B30-6X80-4P	3276007107104	0.003	13.5*4.8
831263	B30-8X30-4P	3276007107166	0.003	13.5*4.8
831277	B30-8X60-4P	3276007107227	0.003	13.5*4.8
830953	B30-10X30-2P	3276007107258	0.003	13.5*4.8
831016	B30-8X25-6P	3276007107142	0.003	13.5*4.8

831280	B30-5X60-6P	3276007106947	0.003	13.5*4.8
831272	B30-6X50-6P	3276007107005	0.003	13.5*4.8
831288	B30-8X20-6P	3276007107111	0.003	13.5*4.8
831289	B30-5X50-8P	3276007106930	0.003	13.5*4.8
831305	B30-6X30-8P	3276007106985	0.003	13.5*4.8
831304	B30-6X40-8P	3276007106992	0.003	13.5*4.8
831285	B30-5X40-10P	3276007106923	0.003	13.5*4.8
831278	B30-6X20-10P	3276007106961	0.003	13.5*4.8
831035	B30-6X25-10P	3276007106978	0.003	13.5*4.8
831043	B30-4X50-12P	3276007106862	0.003	13.5*4.8
831299	B30-5X30-12P	3276007106916	0.003	13.5*4.8
831279	B30-6X16-12P	3276007106954	0.003	13.5*4.8
831290	B30-5X20-15P	3276007106893	0.003	13.5*4.8
830984	B30-4X30-15P	3276007106831	0.003	13.5*4.8
830942	B30-4X40-15P	3276007106848	0.003	13.5*4.8
831066	B30-4X20-20P	3276007106817	0.003	13.5*4.8
831281	B30-5X15-20P	3276007106886	0.003	13.5*4.8
830969	B30-4X10-25P	3276007106770	0.003	13.5*4.8
831003	B30-4X16-25P	3276007106794	0.003	13.5*4.8
831069	B30-3X10-30P	3276007106756	0.003	13.5*4.8
831025	B30-10X80-4P	3276007107319	0.006	13.5*10.8
830979	B30-12X80-4P	3276007107333	0.006	13.5*10.8
830955	B30-8X80-6P	3276007107241	0.006	13.5*10.8

Template version history			
Version	Status	Date Status	Comments
V.0	Under construction	20/08/2018	Template construction
V.1	Validated construction	30/09/2019	Validated Template

Object

Technical data sheet of products

Technical data

«Zhejiang Excellent Industries Co.,Ltd »

«No.57 Donggang Road, Daqiao New District, Haiyan, 314304 Zhejiang, China »

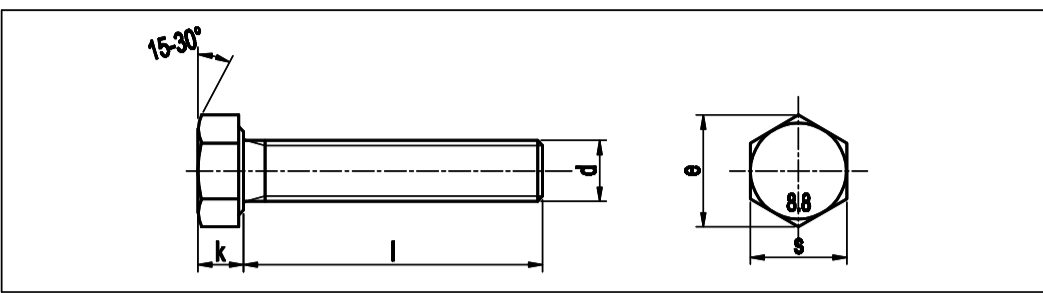
Name product		Contain battery	
Power in Watt		Weight of the battery (gram)	
Nett Weight in gram (without batteries, without packaging)		Type of battery (Li-ion / Alkalin, ...)	
Size of product: LxLxh in centimetre			
Accessories included: detailed it			
Weight packaging			
Size packaging			

Remark: The main technical features could be adjusted by supplier based on different kinds of products.

Photo

Description	B30 Hex screw, nut and 2 washers Steel 8.8 WZP+Cr3
-------------	--

Standard reference	DIN 933
--------------------	---------



Dimensional

All dimensions are in millimeters.
No eccentricity allowed (not visible at 50cm distance).
No broken thread, no hollow teeth, no burnt teeth, no fall-off.
The surface must be smooth and free of oil, foam, dust, rust, black spot or any other undesirable phenomena.

size	M3	M4	M5	M6	M8	M10	M12	M14	M16
p	0.5	0.7	0.8	1.0	1.25	1.5	1.75	2.0	2.0
d	max	2.98	3.97	4.97	5.97	7.97	9.96	11.96	15.96
	min	2.87	3.84	4.74	5.69	7.63	9.59	11.54	15.51
e	min	6.01	7.66	8.78	11.05	14.38	18.9	21.1	24.49
	max	2.12	2.92	3.65	4.15	5.45	6.56	7.89	8.98
k	max	1.88	2.68	3.35	3.65	5.15	6.22	7.32	8.82
	min	5.5	7.0	8.0	10.0	13.0	17.0	18.0	22.0
s	min	5.32	6.78	7.78	9.78	12.73	16.73	18.67	23.67
	min	2920	5100	6230	11600	21200	33700	48600	66700

L	10	16	20	25	30	40
max	10.29	16.35	20.42	25.42	30.42	40.5
min	9.71	15.85	19.58	24.58	29.58	39.5

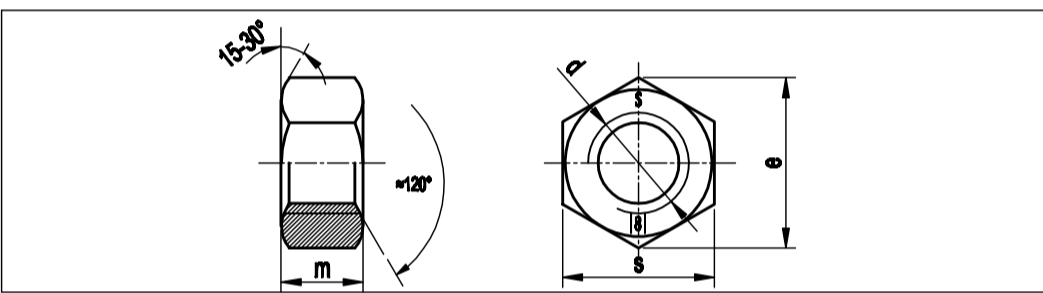
L	50	60	70	80	90	100
max	50.5	60.6	70.6	80.6	90.7	100.7
min	49.5	59.4	69.4	79.4	89.3	99.3

L	120	140	160	180	200
max	120.7	140.8	160.8	180.8	200.92
min	119.3	139.2	159.2	179.2	199.08

Mechanical properties

Material:	35K
Coating:	White zinc plated
Hardness:	250-335 HV

Standard reference	DIN 934
--------------------	---------



Dimensional

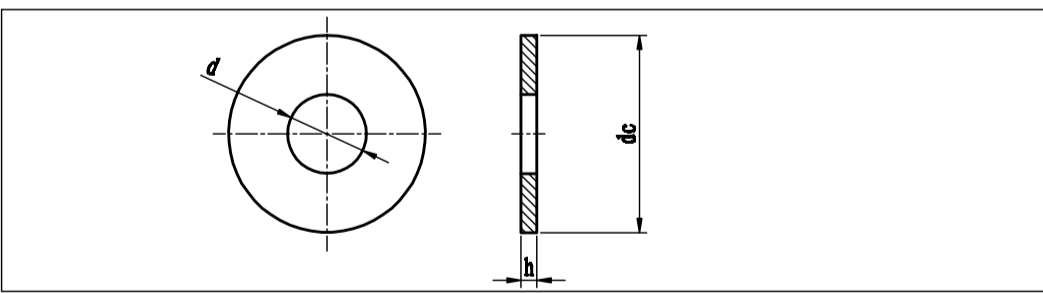
All dimensions are in millimeters.
No eccentricity allowed (not visible at 50cm distance).
The surface must be smooth and free of oil, foam, dust, rust, black spot or any other undesirable phenomena.

size	M2.5	M3	M4	M5	M6	M8	M10	M12	M14	M16	M18	M20
s	max	5.0	5.5	7.0	8.0	10.0	13.0	17.0	19.0	22.0	24.0	27.0
	min	4.82	5.32	6.78	7.78	9.78	12.73	16.73	18.67	21.67	23.67	26.16
m	max	2.0	2.4	3.2	4.0	5.0	6.5	8.0	10.0	11.0	13.0	15.0
	min	1.75	2.15	2.9	3.7	4.7	6.14	7.64	9.64	10.3	12.3	14.3
e	min	5.45	6.01	7.66	8.79	11.05	14.38	18.9	21.1	24.49	26.75	29.58
	min	-	4000	7000	11400	16000	29000	46000	67000	92000	126000	154000

Mechanical properties

Material:	≤M14: Q195, >M14: 35K
Coating:	White zinc plated
Hardness:	≤302 HV

Standard reference	NF E25-513 M
--------------------	--------------



Dimensional

All dimensions are in millimeters.
No eccentricity allowed (not visible at 50cm distance).
The surface must be smooth and free of oil, foam, dust, rust, black spot or any other undesirable phenomena.

Size	d	dc	h
M2.5	2.7-2.94	6.64-7.0	0.43-0.57
M3	3.2-3.38	7.64-8.0	0.72-0.88
M4	4.3-4.48	9.64-10.0	0.72-0.88
M5	5.3-5.48	11.57-12.0	0.9-1.1
M6	6.4-6.62	13.57-14.0	1.08-1.32
M8	8.4-8.62	17.57-18.0	1.35-1.85
M10	10.5-10.77	21.48-22.0	1.8-2.2
M12	13.0-13.27	26.48-27.0	2.25-2.75
M14	15.0-15.27	29.48-30.0	2.25-2.75
M16	17.0-17.27	31.38-32.0	2.7-3.3
M18	19.0-19.33	35.38-36.0	2.7-3.3
M20	21.0-21.33	39.38-40.0	2.7-3.3

Mechanical properties

Material:	Q235
Coating:	White zinc plated
Hardness:	100-250 HV