

Product identification

ADEO Ref	Supplier Ref	EAN CODE	Weight Packaging(Kg)	Size Packaging(Cm)
830954	B12-6X80-4P	3276007106534	0.003	13.5*4.8
831033	B12-5X60-6P	3276007106428	0.003	13.5*4.8
830963	B12-5X80-6P	3276007106442	0.003	13.5*4.8
831026	B12-6X50-6P	3276007106510	0.003	13.5*4.8
831009	B12-6X60-6P	3276007106527	0.003	13.5*4.8
830980	B12-4X80-8P	3276007105988	0.003	13.5*4.8
831002	B12-5X50-8P	3276007106404	0.003	13.5*4.8
830995	B12-6X30-8P	3276007106497	0.003	13.5*4.8
831038	B12-6X40-8P	3276007106503	0.003	13.5*4.8
830998	B12-4X60-10P	3276007105964	0.003	13.5*4.8
831044	B12-5X40-10P	3276007106381	0.003	13.5*4.8
830996	B12-6X25-10P	3276007106480	0.003	13.5*4.8
831027	B12-4X50-12P	3276007105957	0.003	13.5*4.8
831045	B12-5X30-12P	3276007106367	0.003	13.5*4.8
831015	B12-6X15-12P	3276007106466	0.003	13.5*4.8
830997	B12-6X20-12P	3276007106473	0.003	13.5*4.8
831076	B12-4X30-15P	3276007105933	0.003	13.5*4.8
831041	B12-4X40-15P	3276007105940	0.003	13.5*4.8
831061	B12-5X20-15P	3276007106046	0.003	13.5*4.8

831029	B12-4X20-20P	3276007105919	0.003	13.5*4.8
831028	B12-4X25-20P	3276007105926	0.003	13.5*4.8
831063	B12-5X12-20P	3276007106008	0.003	13.5*4.8
831042	B12-5X15-20P	3276007106022	0.003	13.5*4.8
830981	B12-3X25-25P	3276007105872	0.003	13.5*4.8
831011	B12-3X30-25P	3276007105889	0.003	13.5*4.8
831010	B12-4X12-25P	3276007105896	0.003	13.5*4.8
831077	B12-4X15-25P	3276007105902	0.003	13.5*4.8
831059	B12-2.5X8-30P	3276007105810	0.003	13.5*4.8
831078	B12-2.5X20-30P	3276007105827	0.003	13.5*4.8
831058	B12-3X10-30P	3276007105834	0.003	13.5*4.8
831012	B12-3X12-30P	3276007105841	0.003	13.5*4.8
831057	B12-3X16-30P	3276007105858	0.003	13.5*4.8
830956	B12-3X20-30P	3276007105865	0.003	13.5*4.8

Template version history			
Version	Status	Date	Status
V.0	Under construction	20/08/2018	Template construction
V.1	Validated construction	30/09/2019	Validated Template

Object

Technical data sheet of products

Technical data

«Zhejiang Excellent Industries Co.,Ltd »

«No.57 Donggang Road,Daqiao New District,Haiyan,314304 Zhejiang,China »

Name product		Contain battery	
Power in Watt		Weight of the battery (gram)	
Nett Weight in gram		Type of battery	

(without batteries, without packaging		(Li-ion / Alkaline, ...)	
Size of product: LxHxh in centimetre			
Accessories included: detailed it			
Weight packaging			
Size packaging			

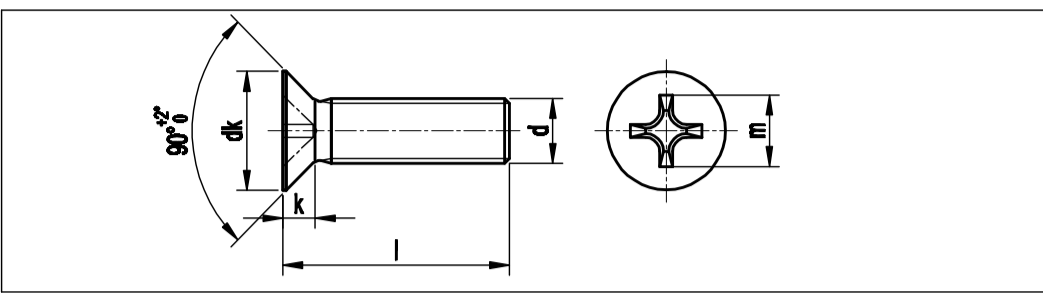
Remark: The main technical features could be adjusted by supplier based on different kinds of products.

Photo

Zhejiang Excellent Industries Co., Ltd.	Technical data sheet	Date of creation	2020/03/09
		Revision index	Rev-1
		Date of Validation	2020/03/09

Description	B12 Screw nut and 1 washer CS PH Steel 8.8 WZP+Cr3
-------------	--

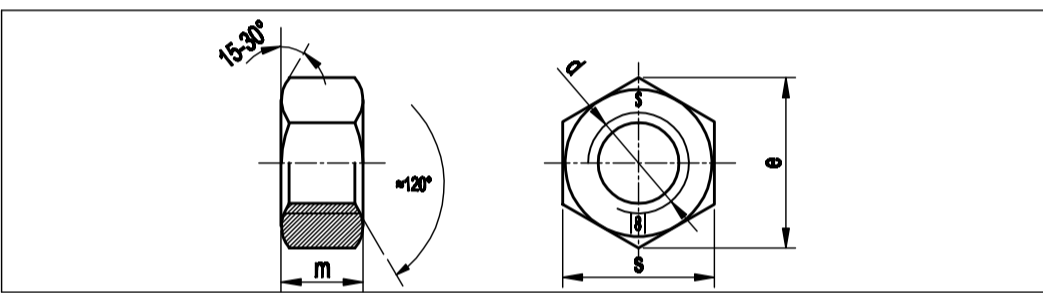
Standard reference	DIN 965
--------------------	---------



Dimensional	
All dimensions are in millimeters. No eccentricity allowed (not visible at 50cm distance). No broken thread, no hollow teeth, no burnt teeth, no fall-off. The surface must be smooth and free of oil, foam, dust, rust, black spot or any other undesirable phenomena.	
size	M2.5 M3 M4 M5 M6 M8
d	min 2.38 2.87 3.84 4.74 5.69 7.63
	max 2.48 2.98 3.98 4.97 5.97 7.97
dk	min 4.4 5.3 7.14 8.84 10.57 14.07
	max 4.7 5.6 7.5 9.2 11 14.5
k	max 1.5 1.65 2.2 2.5 3.0 4.0
m	≈ 2.7 2.9 4.4 4.6 6.6 8.7
Drive No:	PH1 PH2 PH3 PH4
Proof load(N)	min - 2920 5100 8230 11600 21200
L	8 10 12 15 16 20 25 30 40 50 60 70 80
max	8.3 10.3 12.35 15.35 16.35 20.4 25.4 30.4 40.5 50.5 61.0 71.0 81.0
min	7.7 9.7 11.85 14.65 15.65 19.6 24.6 29.6 39.5 49.5 59.0 69.0 79.0

Mechanical properties	
Material:	10B21
Coating:	White zine plated
Hardness:	250-335 HV

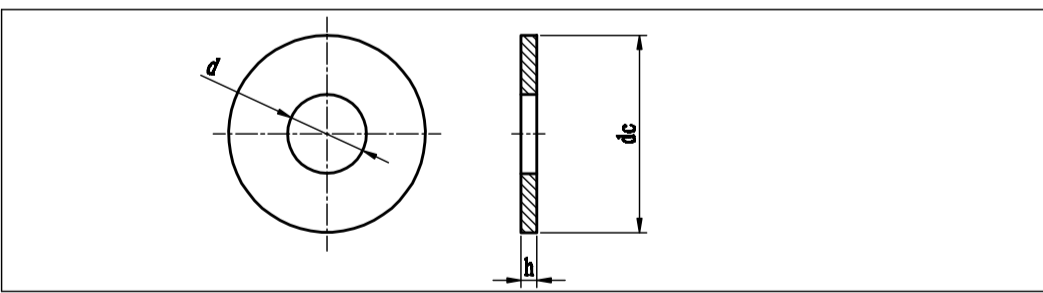
Standard reference	DIN 934
--------------------	---------



Dimensional	
All dimensions are in millimeters. No eccentricity allowed (not visible at 50cm distance). The surface must be smooth and free of oil, foam, dust, rust, black spot or any other undesirable phenomena.	
size	M2.5 M3 M4 M5 M6 M8
s	max 5.0 5.5 7.0 8.0 10.0 13.0
	min 4.82 5.32 6.78 7.78 9.78 12.73
m	max 2.0 2.4 3.2 4.0 5.0 6.5
	min 1.75 2.15 2.9 3.7 4.7 6.14
e	min 5.45 6.01 7.66 8.79 11.05 14.38
	min - 4000 7000 11400 16000 29000

Mechanical properties	
Material:	≤M14: Q195, >M14: 35K
Coating:	White zine plated
Hardness:	≤302 HV

Standard reference	NF E25-513 M
--------------------	--------------



Dimensional	
All dimensions are in millimeters. No eccentricity allowed (not visible at 50cm distance). The surface must be smooth and free of oil, foam, dust, rust, black spot or any other undesirable phenomena.	
Size	d dc h
M2.5	2.7-2.94 6.64-7.0 0.43-0.57
M3	3.2-3.38 7.64-8.0 0.72-0.88
M4	4.3-4.48 9.64-10.0 0.72-0.88
M5	5.3-5.48 11.57-12.0 0.9-1.1
M6	6.4-6.62 13.57-14.0 1.08-1.32
M8	8.4-8.62 17.57-18.0 1.35-1.65

Mechanical properties	
Material:	Q235
Coating:	White zine plated
Hardness:	100-250 HV

Family code	Supplier refs	Bolt size	Nut size	Washer size
B12	B12-2,5x8-30P	2.5x8	M2.5	M2.5
B12	B12-2,5x20-30P	2.5x20	M2.5	M2.5
B12	B12-3x10-30P	3x10	M3	M3
B12	B12-3x12-30P	3x12	M3	M3
B12	B12-3x16-30P	3x16	M3	M3
B12	B12-3x20-30P	3x20	M3	M3
B12	B12-3x25-25P	3x25	M3	M3
B12	B12-3x30-25P	3x30	M3	M3
B12	B12-4x12-25P	4x12	M4	M4
B12	B12-4x15-25P	4x15	M4	M4
B12	B12-4x20-20P	4x20	M4	M4
B12	B12-4x25-20P	4x25	M4	M4
B12	B12-4x30-15P	4x30	M4	M4
B12	B12-4x40-15P	4x40	M4	M4
B12	B12-4x50-12P	4x50	M4	M4
B12	B12-4x60-10P	4x60	M4	M4
B12	B12-4x80-8P	4x80	M4	M4
B12	B12-5x12-20P	5x12	M5	M5
B12	B12-5x15-20P	5x15	M5	M5
B12	B12-5x20-15P	5x20	M5	M5
B12	B12-5x30-12P	5x30	M5	M5
B12	B12-5x40-10P	5x40	M5	M5
B12	B12-5x50-8P	5x50	M5	M5
B12	B12-5x60-6P	5x60	M5	M5
B12	B12-5x80-6P	5x80	M5	M5
B12	B12-6x15-12P	6x15	M6	M6
B12	B12-6x20-12P	6x20	M6	M6
B12	B12-6x25-10P	6x25	M6	M6
B12	B12-6x30-8P	6x30	M6	M6
B12	B12-6x40-8P	6x40	M6	M6
B12	B12-6x50-6P	6x50	M6	M6
B12	B12-6x60-6P	6x60	M6	M6
B12	B12-6x80-4P	6x80	M6	M6